

Interlude

Georges Delerue(1925-1992)

Arrangement par la classe de FE : Manon, Emile, Eléonore, Marion, Loïc, Antoine, Diane, Maxime, Guilhem, Nathalie, Adrien

$\text{♩} = 65$

Am D

Clar. Sib

Cor en Fa

Violon

Alto

Violoncelle

Guitare classique

5 Am D C D E

Clar. Sib

Cor Fa

Vln.

Alt.

Vc.

Guit.

9

Am Em

Clar. Sib

Cor Fa

Vln.

Alt.

Vc.

Guit.

Detailed description: This system contains measures 9 through 12. The Clarinet in B-flat (Clar. Sib) and Cor Anglais (Cor Fa) parts feature melodic lines with slurs and accents. The Violin (Vln.), Alto (Alt.), and Viola (Vc.) parts play rhythmic accompaniment with eighth notes. The Guitar (Guit.) part plays a steady eighth-note pattern. Chords are indicated as Am and Em.

13

Dm Am Em Am

Clar. Sib

Cor Fa

Vln.

Alt.

Vc.

Guit.

Detailed description: This system contains measures 13 through 16. The Clarinet in B-flat (Clar. Sib) and Cor Anglais (Cor Fa) parts continue their melodic lines. The Violin (Vln.), Alto (Alt.), and Viola (Vc.) parts maintain their rhythmic accompaniment. The Guitar (Guit.) part continues its eighth-note pattern. Chords are indicated as Dm, Am, Em, and Am.

Clarinete en Si \flat

Interlude

Georges Delerue(1925-1992)

Arrangement par la classe de FE : Manon, Emile, Eléonore, Marion, Loïc, Antoine, Diane, Maxime, Guilhem, Nathalie, Adrien

$\text{♩} = 65$ Bm E

5 Bm E D E F#

9 Bm F#m

13 Em Bm F#m

17 Bm

Cor en Fa

Interlude

Georges Delerue(1925-1992)

Arrangement par la classe de FE : Manon, Emile, Eléonore, Marion, Loïc, Antoine, Diane, Maxime, Guilhem, Nathalie, Adrien

♩ = 65

A



Violon

Interlude

Georges Delerue(1925-1992)

Arrangement par la classe de FE : Manon, Emile, Eléonore, Marion, Loïc, Antoine, Diane, Maxime, Guilhem, Nathalie, Adrien

♩ = 65



Alto

Interlude

Georges Delerue(1925-1992)

Arrangement par la classe de FE : Manon, Emile, Eléonore, Marion, Loïc, Antoine, Diane, Maxime, Guilhem, Nathalie, Adrien

♩ = 65



5



9



13



17



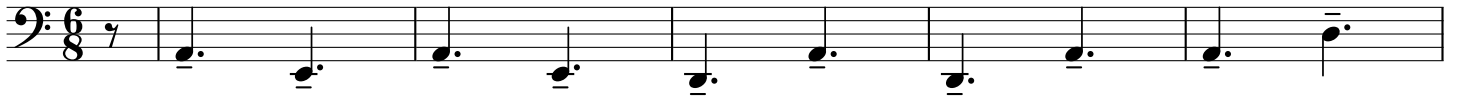
Violoncelle

Interlude

Georges Delerue(1925-1992)

Arrangement par la classe de FE : Manon, Emile, Eléonore, Marion, Loïc, Antoine, Diane, Maxime, Guilhem, Nathalie, Adrien

♩ = 65



7



12



Arrangement par la classe de FE : Manon, Emile, Eléonore, Marion, Loïc, Antoine, Diane, Maxime, Guilhem, Nathalie, Adrien

♩ = 65

